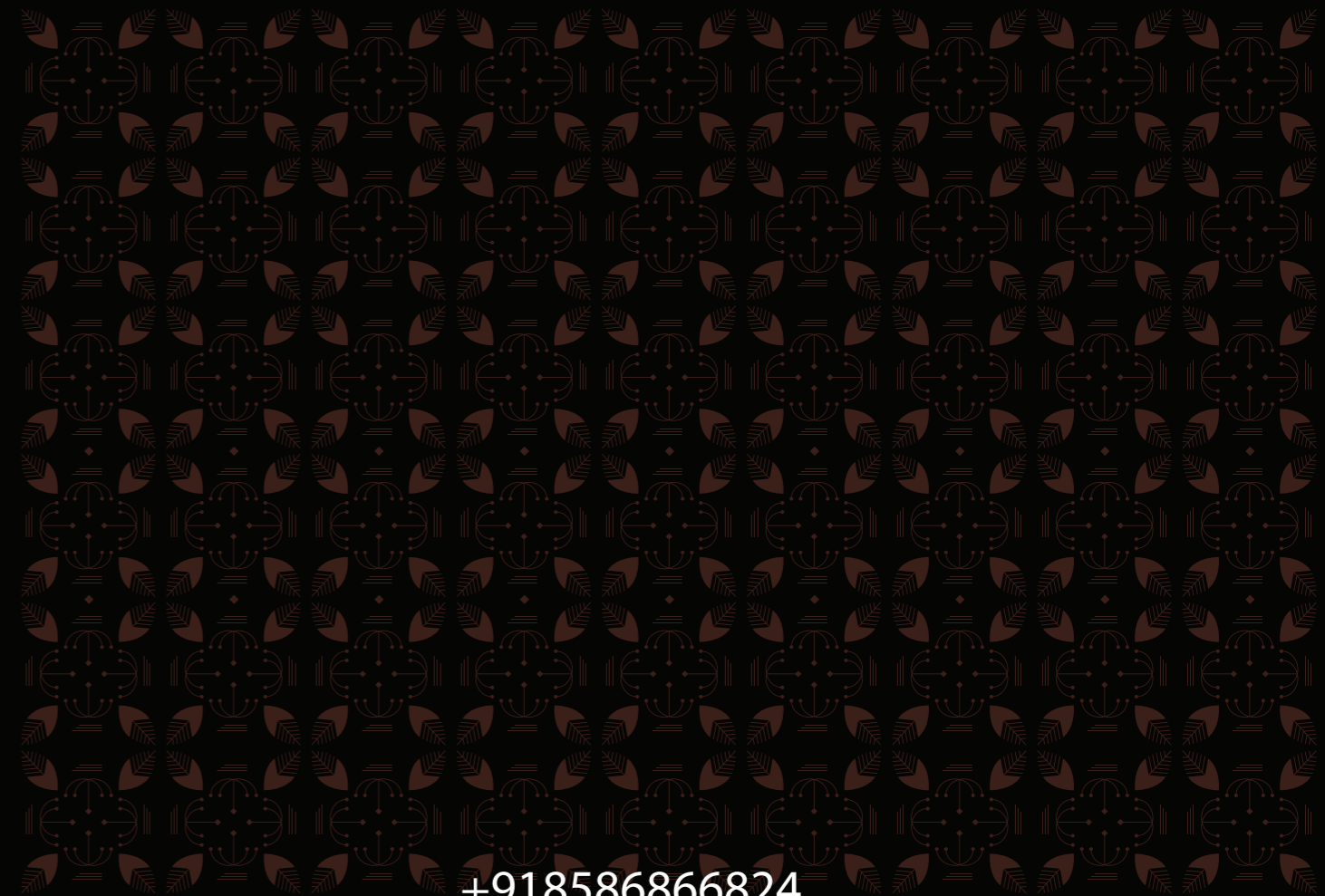




**GODREJ SOUTH ESTATE**  
SOUTH DELHI



*Innovation. Sustainability. Excellence.*

You'll find these values are the cornerstone of everything we build at Godrej Properties. And it is this very same legacy of trust and commitment to cutting-edge design that gives shape to whatever we put our hands to. Rooted in an unwavering passion for innovation, we've built many landmarks across the country, over the past 122 years.

Some of which feature projects such as Godrej One, The Trees, Godrej Golf Links and Godrej Reflections. So, with a proud tradition of many firsts in the real estate industry, we still find ourselves busy at work, laying the foundations for landmarks that are truly one of a kind.

# A LEGACY OF TRUST.



Actual site photograph.

+918586866824





BRINGING THIS LEGACY  
NOW FOR THE FIRST TIME TO SOUTH DELHI.

+918586866824

Stock images for representation purpose only.



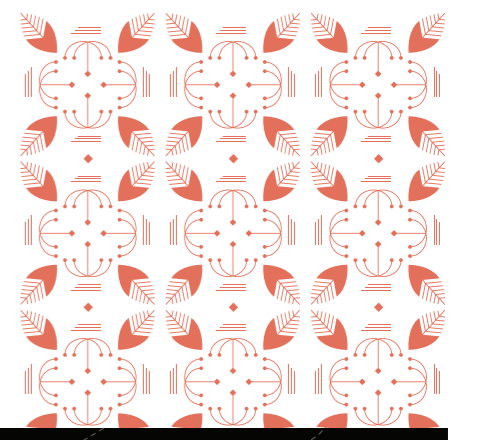
# AN ADDRESS THAT SERVES AS YOUR INTRODUCTION.



Imagine an address that could  
redefine the skyline of South Delhi.  
One with the stature that towers  
far above the rest. One that comes  
from intricate design and a deep  
understanding of what luxury truly  
is.  
An address that takes even the air  
you breathe to a whole new level.  
An address that serves as your  
calling card. Welcome to luxury's

+918586866824

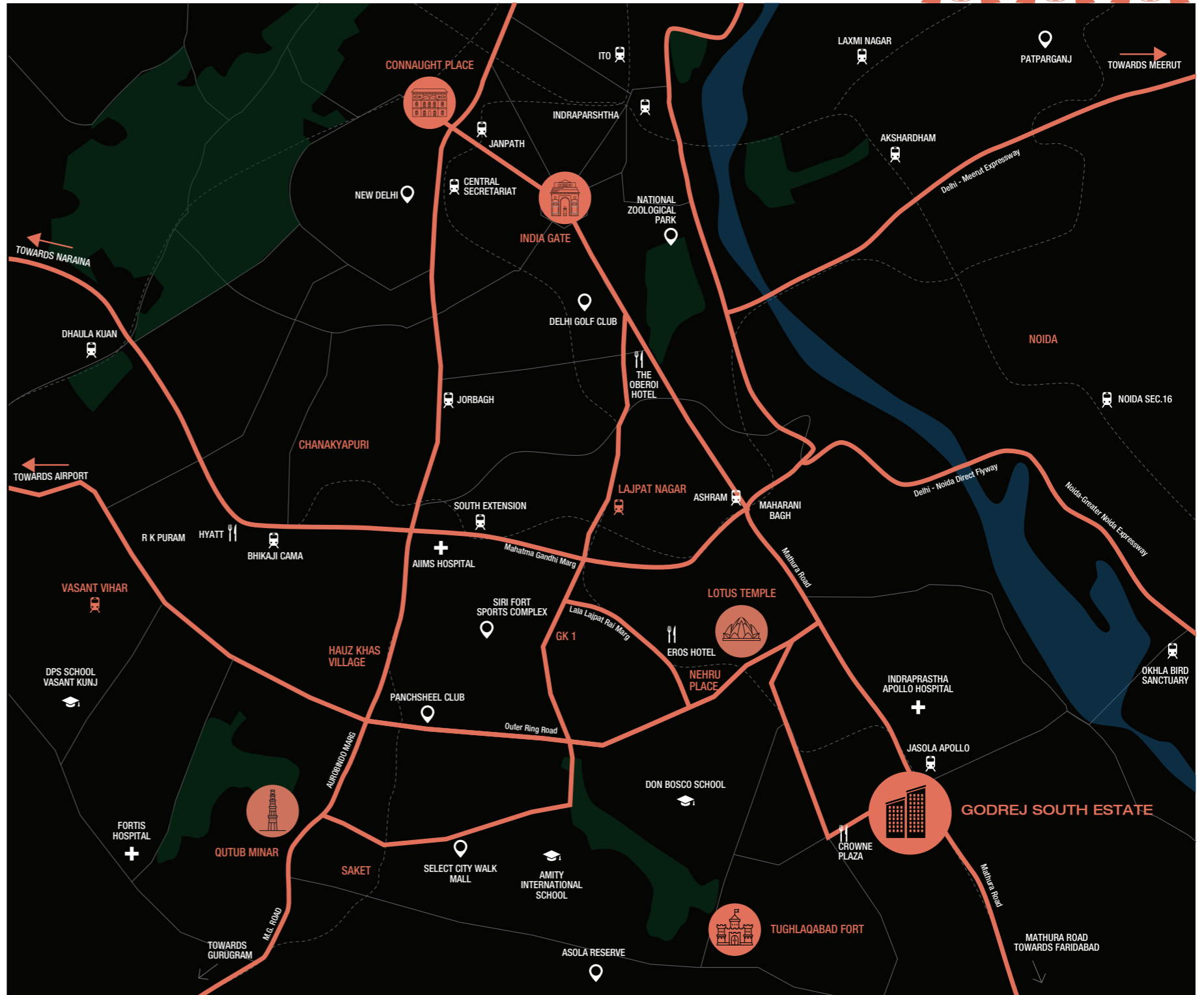
Stock images for representation purpose only.








# A LANDMARK THAT HAS ALL THE RIGHT CONNECTIONS.

Here's a landmark that will always find itself in good company. This revered address, in fact, finds itself near one of the finest parts of South Delhi as places like Greater Kailash, New Friends Colony, Defence Colony and Saket are merely few kilometers away. It also finds itself in the company of many notable landmarks in the vicinity around. Landmarks such as the Lotus Temple, Tughlaqabad Fort, NFC Club and the Asola Reserve to mention a few. One of its greatest features, however, remains the great connectivity it enjoys with both Noida and Faridabad as in close quarters, with easy connectivity to Gurgaon.

Thanks to its strategic location with easy connectivity to the Delhi-Noida Direct road and the Outer Ring Road, it ensures that neighbouring cities like Noida and Gurgaon are in close quarters. Moreover, the Outer Ring Road also happens to be very close to our location.

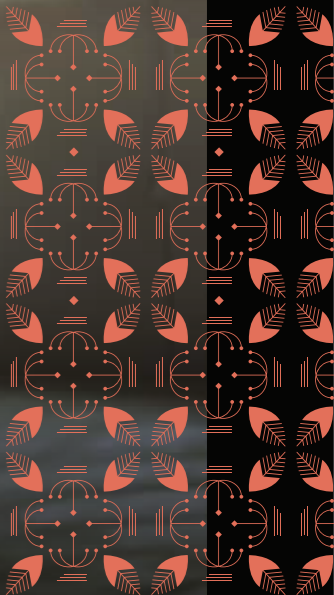


SOURCE: GOOGLE MAPS, AS REFERRED TO ON JULY, 2019

-  LANDMARK
-  METRO STATION
-  HOSPITAL
-  SCHOOL
-  HOTEL

+918586866824





Stock images for representation purpose only.

EXPERIENCE  
LANDMARK LUXURY  
IN ALL ITS GLORY.

+918586866824



There's a lifestyle that sets a new landmark when it comes to luxury. You'll experience it when you take a dip in its pool. Or a stroll across its finely manicured gardens. You'll get a sense of it in its grand entrances, elegant drop offs and water features inspired by palaces. Yes, this is a place where there are living spaces that discern the finer points of design and platter up a lifestyle of pure indulgence.



### Project Highlights

- Tallest residential towers in South Delhi
- Purer Air with FMAP and MFFA Systems\*
- Private Park
- Lavish Boutique Clubhouse
- 5-Tier Security

\*Filter-less Magnetic Air Purification & Mechanical Filter-less Fresh Air Systems



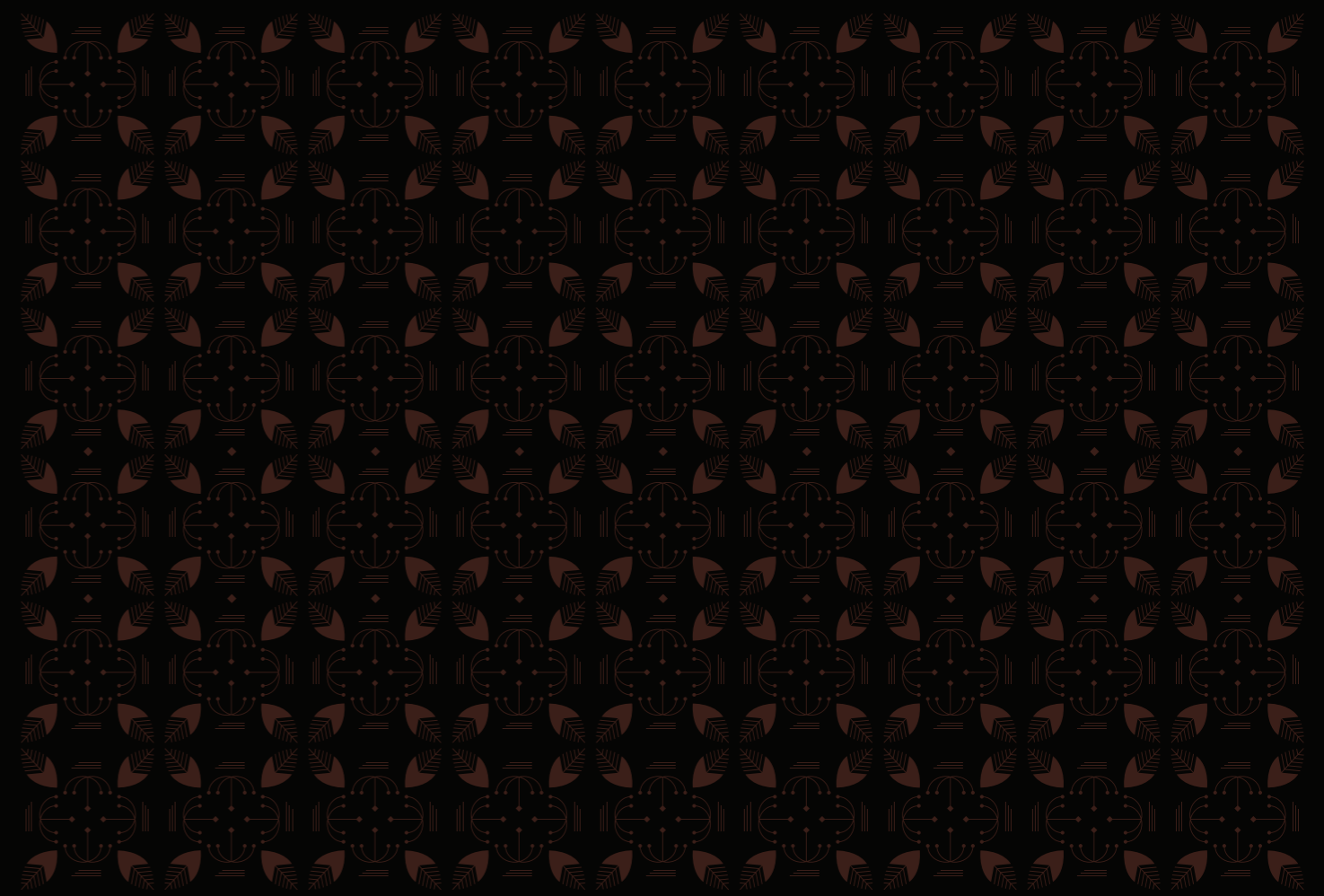
LIVE THE LANDMARK

+918586866824





**GODREJ SOUTH ESTATE**  
SOUTH DELHI



+918586866824