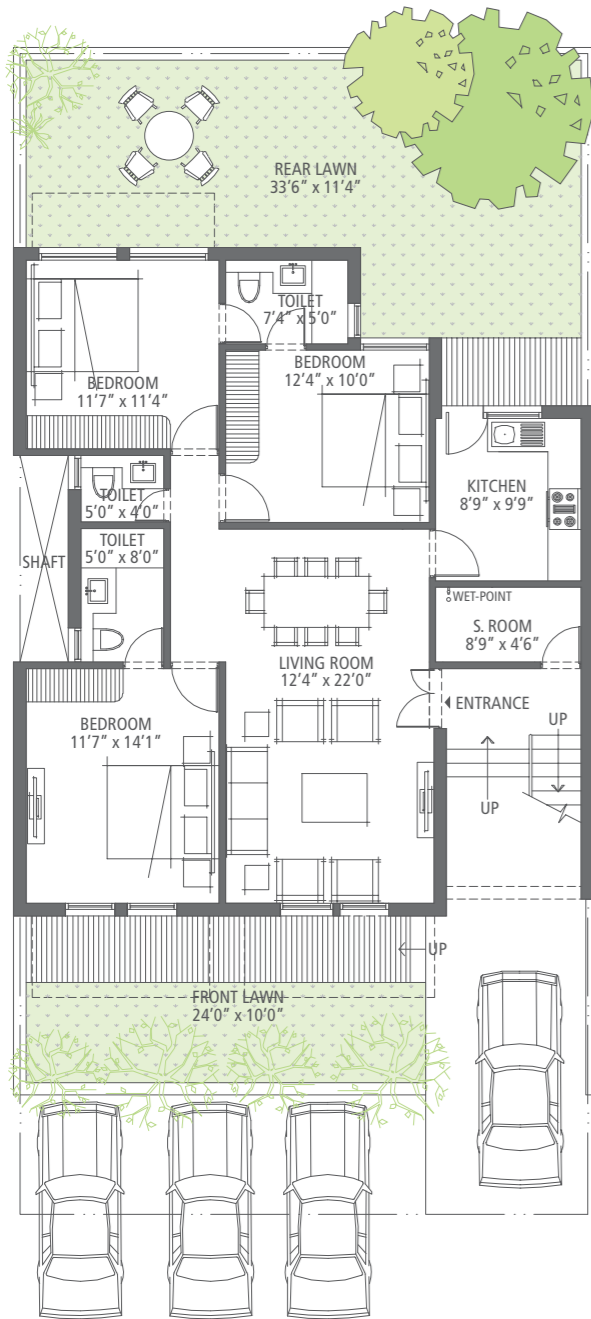
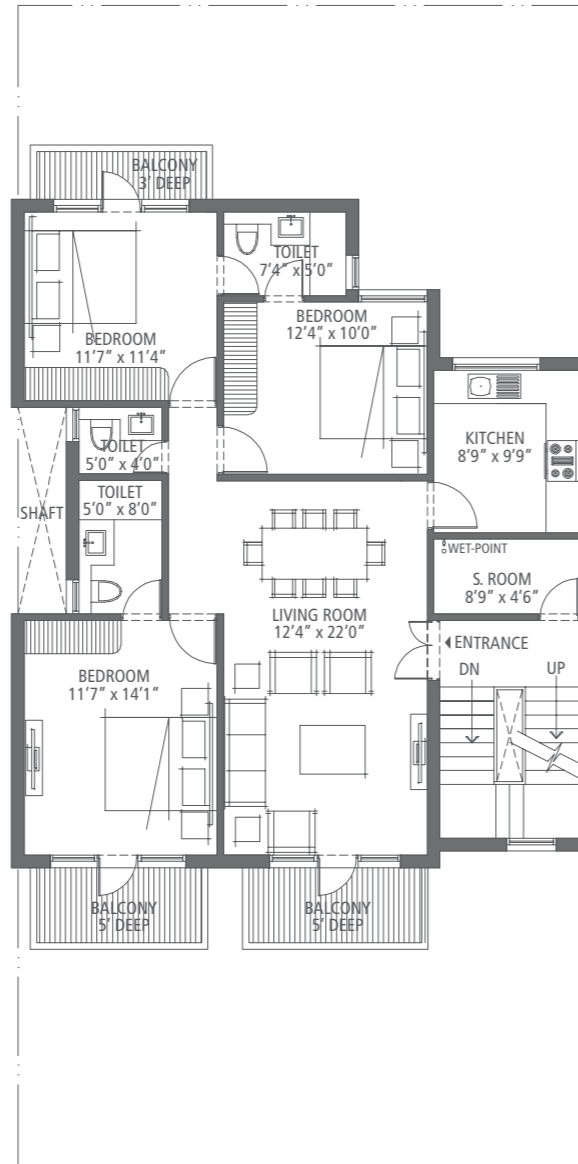


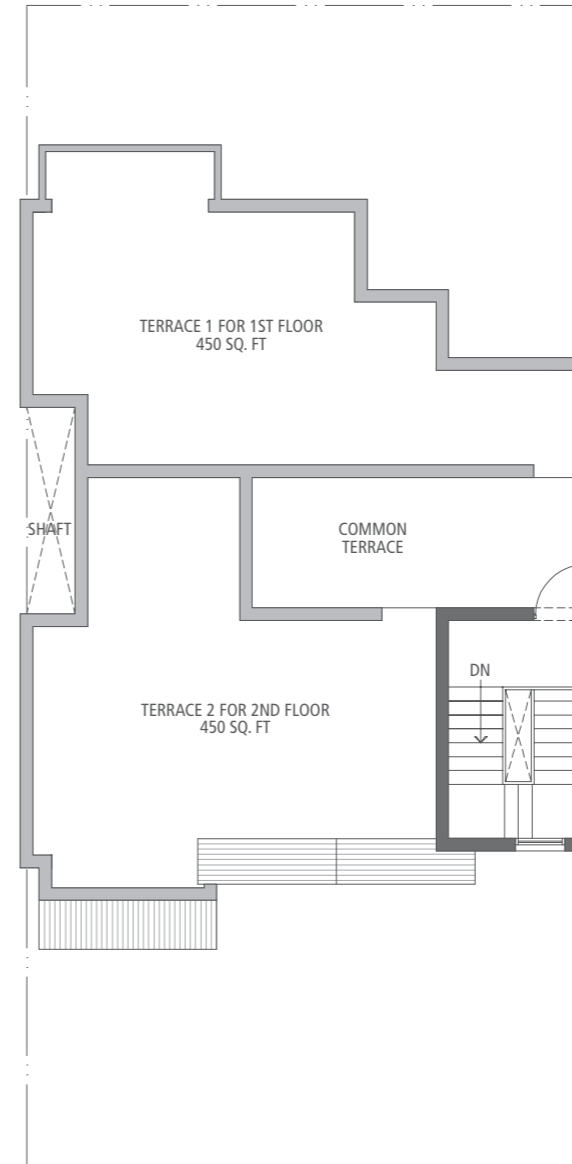
267 sq. yds. (Type F)
3 Bedroom, 3 Bathroom and S. Room



Ground Floor Plan



First & Second Floor Plan



Terrace Floor Plan

Floor	Super Built-up area (including staircase & balcony)	Lawns	Terrace	Total useable area
Ground	1380 sq. ft.	637 sq. ft.	-	2017 sq. ft.
First	1380 sq. ft.	-	450 sq. ft.	1830 sq. ft.
Second	1380 sq. ft.	-	450 sq. ft.	1830 sq. ft.

1 sq. metre = 1.196 sq. yard & 1 sq. metre = 10.76 sq. feet.

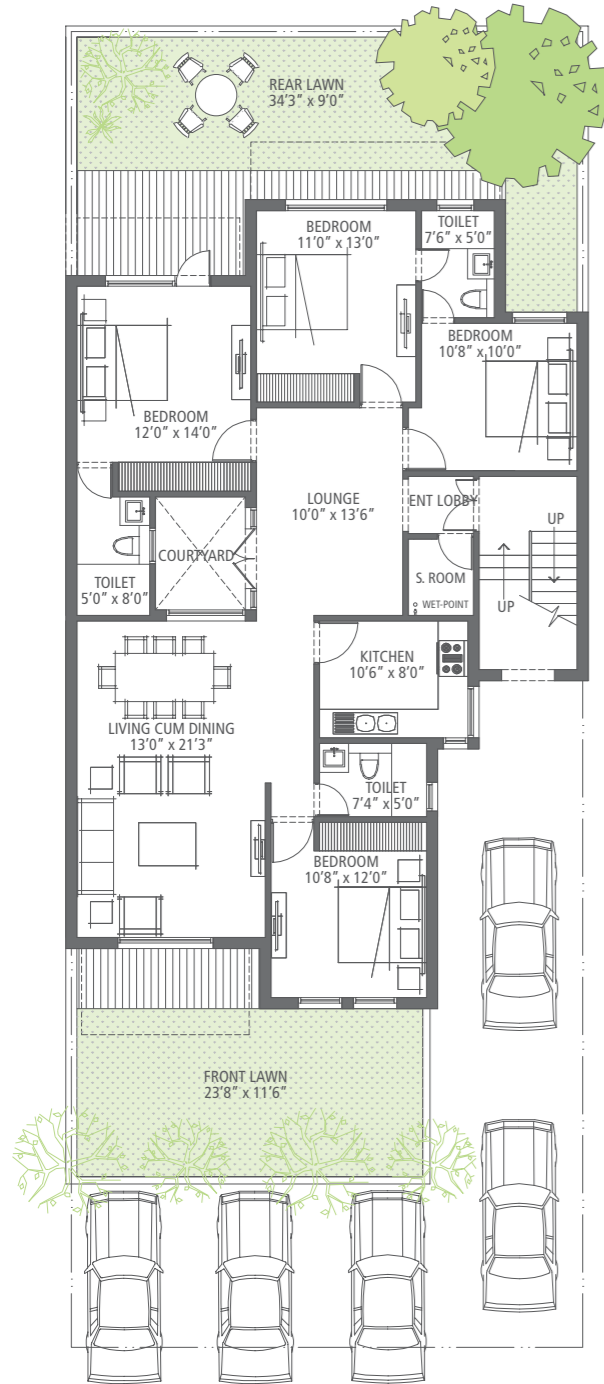
In the interest of maintaining high standards, all floor plans, layout plans, areas, dimensions and specifications are indicative and are subject to change as decided by the company or by any competent authority. Soft furnishing, cupboards, kitchen cabinets, furniture and gadgets are not part of the offering.



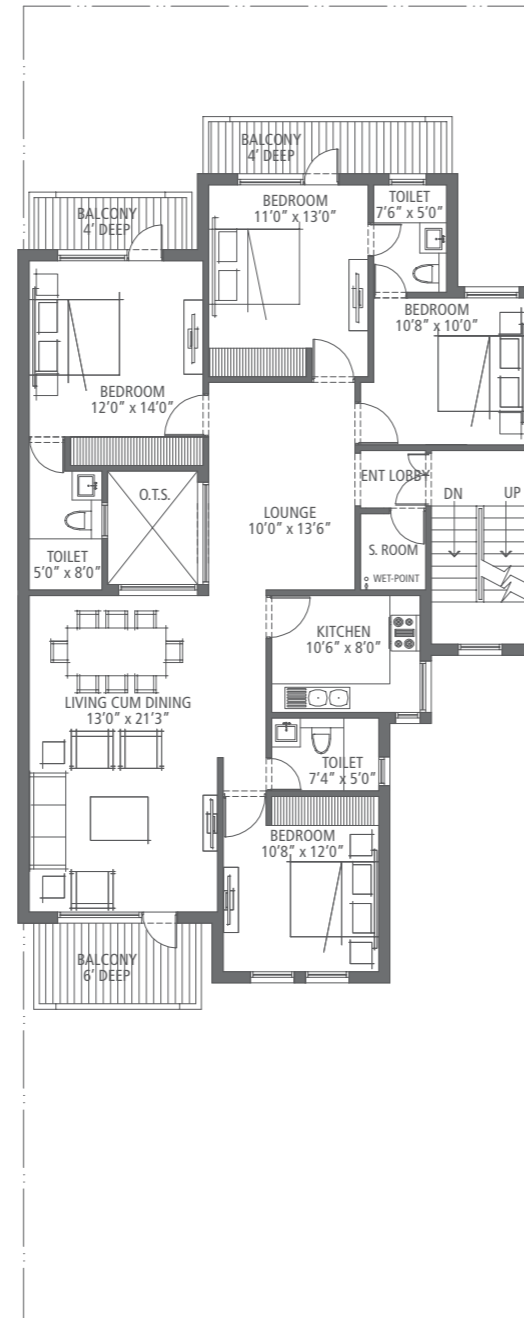
350 sq. yds. (Type D)
4 Bedroom, 3 Bathroom and S. Room



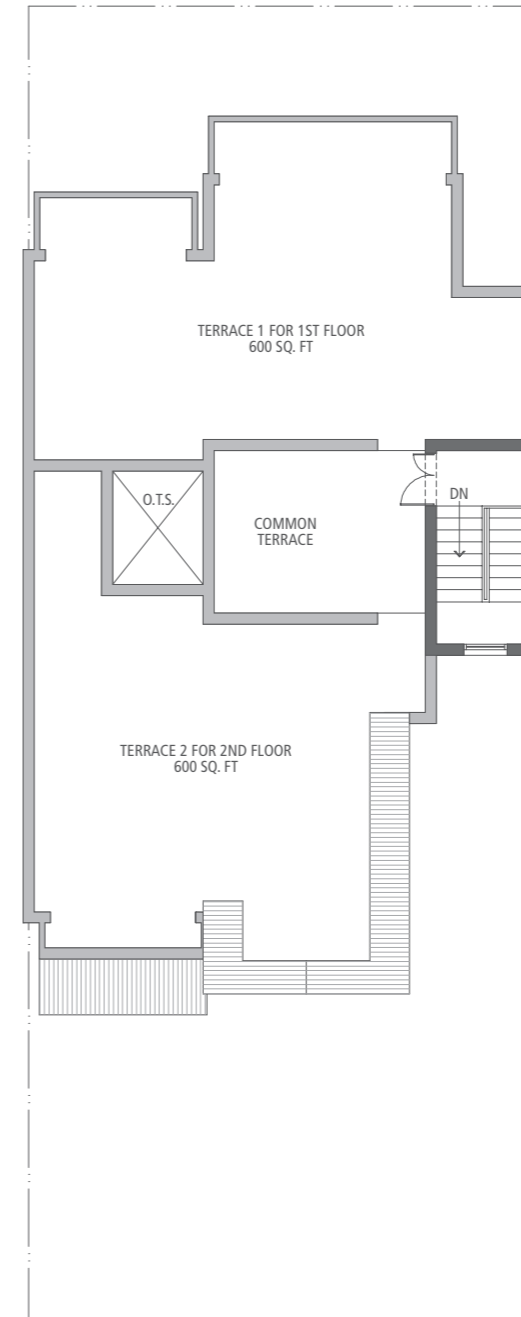
EMERALD FLOORS
AT EMERALD HILLS



Ground Floor Plan



First & Second Floor Plan



Terrace Floor Plan

Floor	Super Built-up area (including staircase & balcony)	Lawns	Terrace	Total useable area
Ground	1750 sq. ft.	672 sq. ft.	-	2422 sq. ft.
First	1750 sq. ft.	-	600 sq. ft.	2350 sq. ft.
Second	1750 sq. ft.	-	600 sq. ft.	2350 sq. ft.

1 sq. metre = 1.196 sq. yard & 1 sq. metre = 10.76 sq. feet.

In the interest of maintaining high standards, all floor plans, layout plans, areas, dimensions and specifications are indicative and are subject to change as decided by the company or by any competent authority. Soft furnishing, cupboards, kitchen cabinets, furniture and gadgets are not part of the offering.

